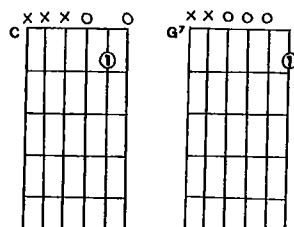


ANYONE CAN PLAY

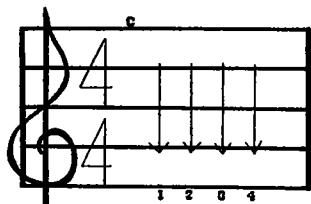
GUITAR

VOLUME I

2

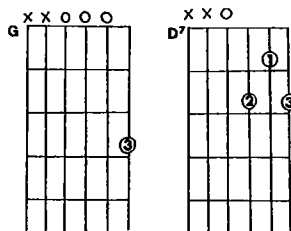
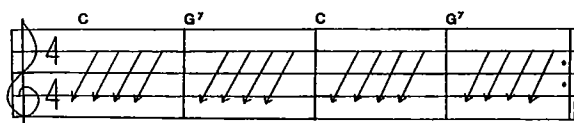


Strum #1

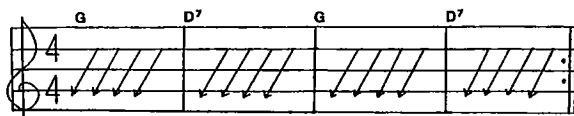


Count 1 - 2 - 3 - 4

Chord Exercise #1

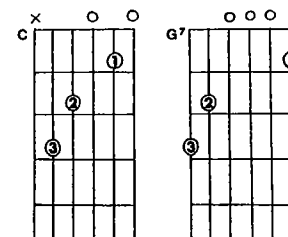


Chord Exercise #2



© Copyright 1985 by Vern Juran
Copyright Assigned 1986 to Mel Bay Publications, Inc.

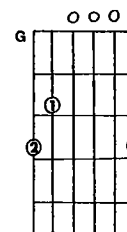
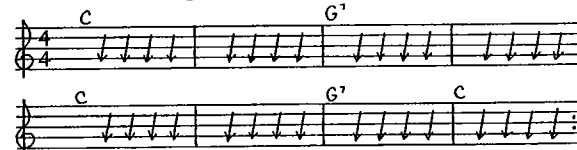
3



Use these forms on Chord Exercise #1

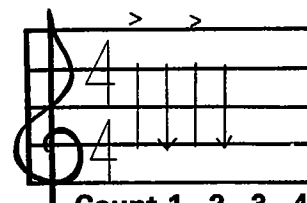
Song #1

SKIP TO MY LOU



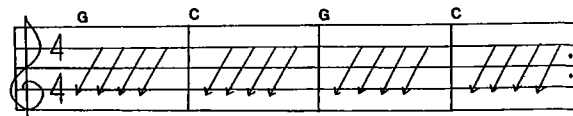
Use this form on Chord Exercise #2

Strum #2



Count 1 - 2 - 3 - 4

Chord Exercise #3



4 Chord Exercise #4

Musical notation for Chord Exercise #4 in 4/4 time. The exercise consists of four measures of chords: G, C, D7, and G. Each measure contains a single chord with a slash through it, indicating a strummed chord.

Fingerboard diagram for Chord Exercise #4. The diagram shows a guitar neck with strings 1-6 and frets 1-5. Chords G, C, D7, and G are indicated above the frets. The G chord is shown with fingers 2 and 3 on the 3rd fret.

Song #2

RED RIVER VALLEY

Musical notation for Song #2, 'RED RIVER VALLEY', in 4/4 time. The notation is arranged in six systems, each with a treble and bass clef. The chords are: G, C, G, D7, G, G7, C, D7, G, G7, C, D7, G.

Chord Exercise #6

Musical notation for Chord Exercise #6 in 4/4 time. The exercise consists of four measures of chords: G, E7, C, and D7. Each measure contains a single chord with a slash through it, indicating a strummed chord.

Fingerboard diagram for Chord Exercise #6. The diagram shows a guitar neck with strings 1-6 and frets 1-5. Chords G, E7, C, and D7 are indicated above the frets. The G chord is shown with fingers 1, 2, and 3 on the 3rd fret.

Fingerboard diagram for Chord Exercise #5. The diagram shows a guitar neck with strings 1-6 and frets 1-5. Chords D, C, G, and D are indicated above the frets. The D chord is shown with fingers 1, 2, and 3 on the 2nd fret.

Chord Exercise #7

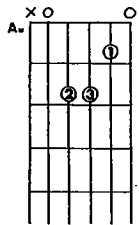
Musical notation for Chord Exercise #7 in 4/4 time. The exercise consists of four measures of chords: C, F, C, and F. Each measure contains a single chord with a slash through it, indicating a strummed chord.

Chord Exercise #5

Musical notation for Chord Exercise #5 in 4/4 time. The exercise consists of four measures of chords: D, C, G, and D. Each measure contains a single chord with a slash through it, indicating a strummed chord.

Chord Exercise #8

Musical notation for Chord Exercise #8 in 4/4 time. The exercise consists of four measures of chords: C, F, G7, and C. Each measure contains a single chord with a slash through it, indicating a strummed chord.

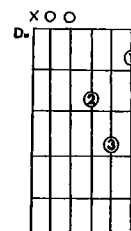


Chord Exercise #9

Strum #3

Song #3

SCARBOROUGH FAIR



Chord Exercise #10

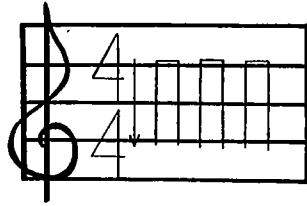
Strum #4

Chord Exercise #11

Song #4

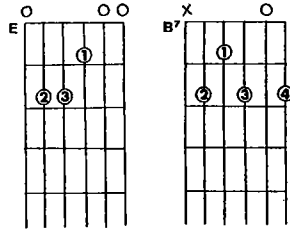
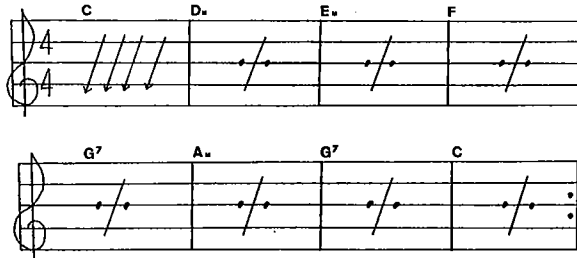
BLUES EXAMPLE

Strum #5

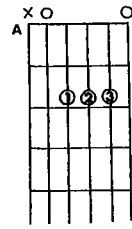
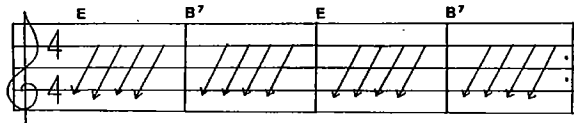


Count 1 - 2 & 3 & 4 &

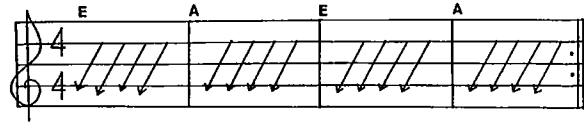
Chord Exercise #12



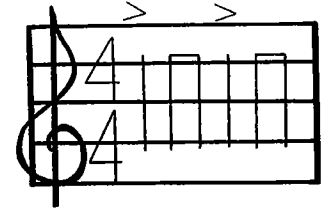
Chord Exercise #13



Chord Exercise #14

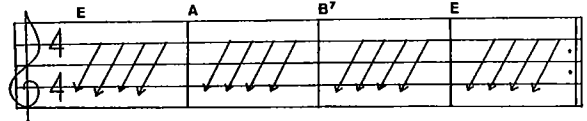


Strum #6



Count 1 - 2 & 3 - 4 &

Chord Exercise #15

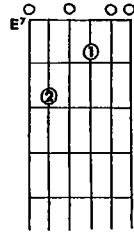


Chord Exercise #16

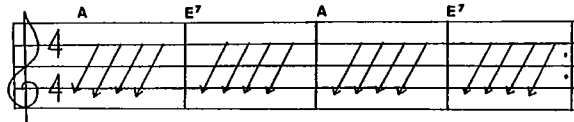
Song #5

ANOTHER BLUES PROGRESSION

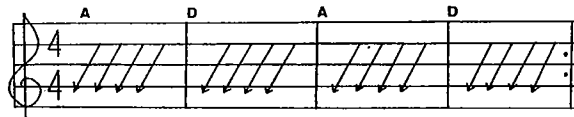




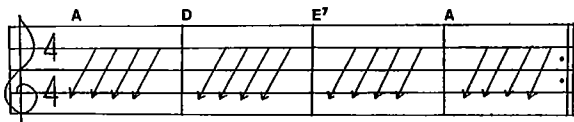
Chord Exercise #17



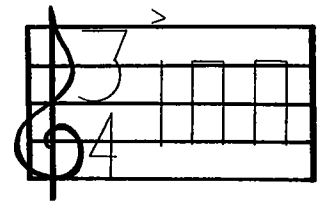
Chord Exercise #1



Chord Exercise #19



Strum #7



Count 1 - 2 & 3 &

Song #6

HOUSE OF THE RISIN' SUN



CHORD CHART

The chart displays 16 guitar chord diagrams arranged in a 4x4 grid. Each diagram shows a six-string guitar neck with frets and strings. Above each diagram are symbols: 'x' for a muted string and 'o' for an open string. Fingering numbers (1-4) are placed on the strings to indicate finger placement.

- Row 1:** C (x x x o o), G⁷ (x x o o o), G (x x o o o), D⁷ (x x o)
- Row 2:** C⁷ (x o o), G⁷ (o o o), G (o o o), D (x o o)
- Row 3:** E⁷ (o o o), F (x x), A⁷ (x o o), D⁷ (x o o)
- Row 4:** E (o o o), B⁷ (x o), A (x o o), E⁷ (o o o)