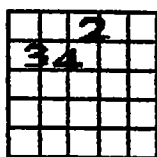
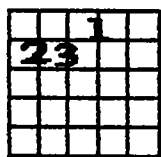


ANYONE
CAN PLAY

GUITAR

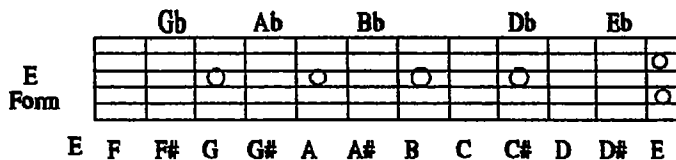
VOLUME 2

E E bar chord

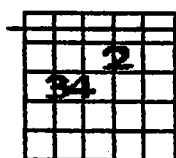


form

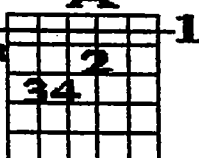
E BAR CHORD CHART



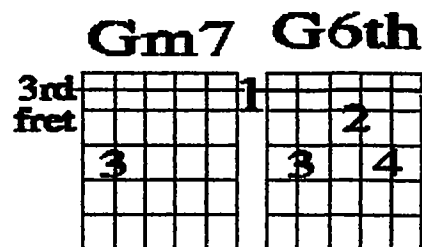
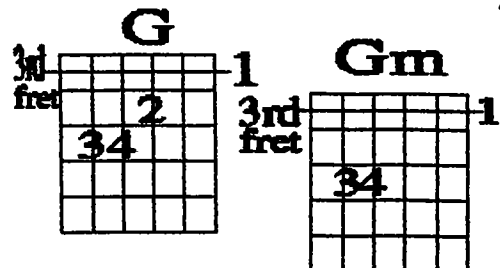
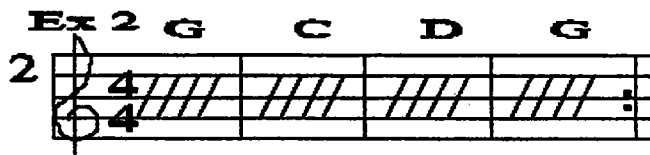
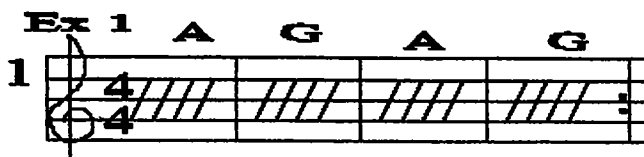
F



A



1st fret



G7 **A**

G7 alt **Bb**

Ex 3 **G Am Bm C D7**

Ex 4 **G B7 A D7**

A

Bb

D

A BAR CHORD CHART

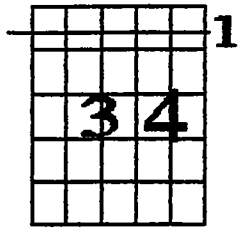
A Form

Bb	Db	Eb	Gb	Ab							
A#	B	C	C#	D	D#	E	F	F#	G	G#	A

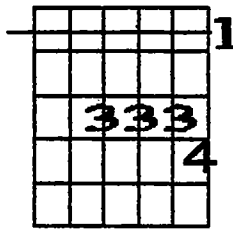
Dm

Dm7

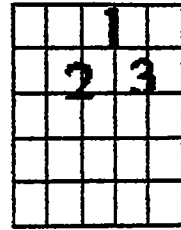
Moveable
7th



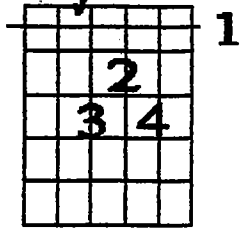
Moveable
7th (alt.)



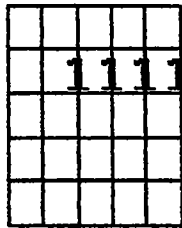
A
major7



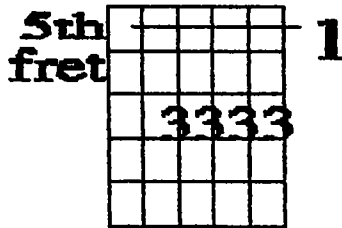
Moveable
Major 7th



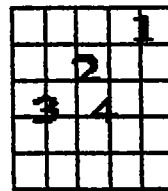
A6



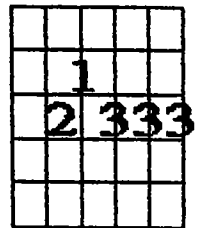
D6



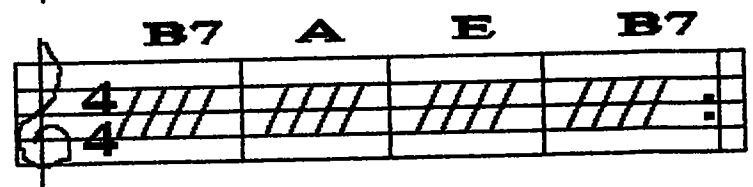
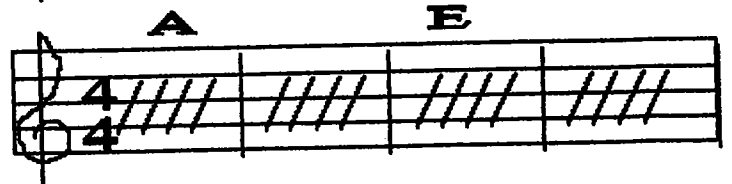
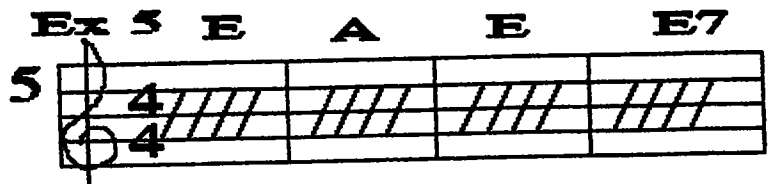
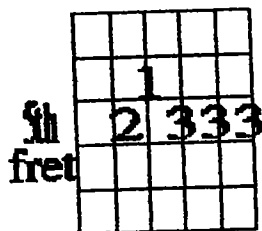
C7



C9th



D9th



Ex 6 E F#m G#m A B7

6

A musical staff with a treble clef and a 4/4 time signature. The staff contains a single bar with diagonal hatching, indicating a specific rhythmic pattern. The number '6' is written to the left of the staff.

Ex 7 C Am F G7 C

7

A musical staff with a treble clef and a 4/4 time signature. The staff contains a single bar with diagonal hatching. The number '7' is written to the left of the staff.

Ex 8 A D E

8

A musical staff with a treble clef and a 4/4 time signature. The staff contains a single bar with diagonal hatching. The number '8' is written to the left of the staff.

Ex 9 A D7 A D7

9

A musical staff with a treble clef and a 4/4 time signature. The staff contains a single bar with diagonal hatching. The number '9' is written to the left of the staff.

A D7 E7 A

A musical staff with a treble clef and a 4/4 time signature. The staff contains a single bar with diagonal hatching.

Ex 10 A D9 A A7

10

A musical staff with a treble clef and a 4/4 time signature. The staff contains a single bar with diagonal hatching. The number '10' is written to the left of the staff.

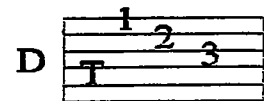
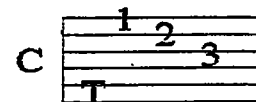
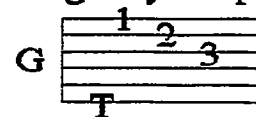
D9 A

A musical staff with a treble clef and a 4/4 time signature. The staff contains a single bar with diagonal hatching.

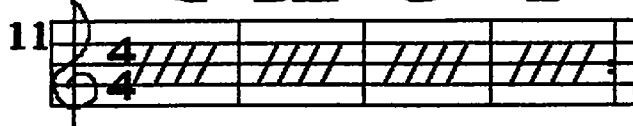
E9 D9 AA7DDm A F9 E9

A musical staff with a treble clef and a 4/4 time signature. The staff contains a single bar with diagonal hatching.

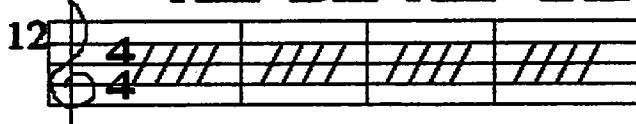
Fingerstyle arpeggio



Ex 11 G Bm C D



Ex 12 Am Dm Am Dm



Am E7 Am E7

