

Mel Bay's

*ANYONE
CAN PLAY*

JAZZ
GUITAR

© 1994 Mel Bay Publications, Inc. Pacific, Mo.
All Rights Reserved. Made in U.S.A.

1st Group:

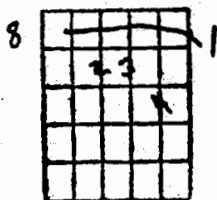
Gmaj7 X X 1 2 3 4	G6 X X 1 2 3 4	Cmaj7 X 1 2 3 4	C6 X 1 2 3 4	Am7 X 2 3 3 3 3	Am6 X 2 3 3 3
Bm7 X 2 3 3 3 3	Bm6 X 2 3 3 3	D7 X 1 2 3 4	D9 X 1 2 3 3 3	D11 X 2 3 4	D7b5 X 2 3 4

2nd Group:

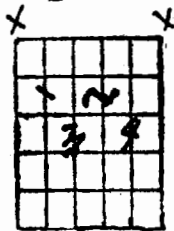
Gmaj7 5th X X 1 2 3 3	G6 X X 1 2 3 4	Cmaj7 7th X X 1 2 3 4	C6 8 1 2 3 4	Am7 7th X X 1 2 3 4	Am7 7th X X 1 2 3 4
Bm7 9th X X 1 2 3 4	Bm7 9th X X 1 2 3 4	D7 5 1 2 3 4	D9 4 X X 1 2 2 2	D13 4th X X 1 2 3 4	D13b9 4th X X 1 2 3 4

3rd Group:

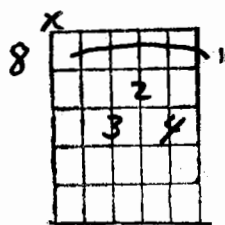
Fmaj7b5



Bm7b5

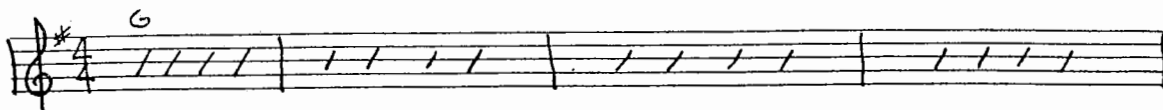


FMAJ.7

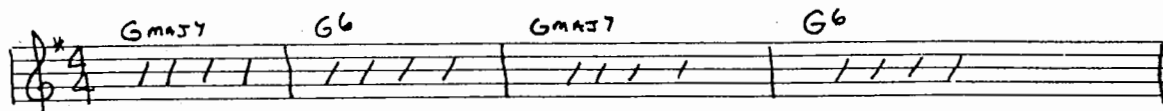


Ex. 1 (old)

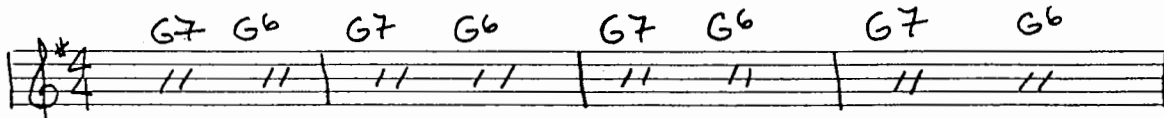
5



Ex. 2 (new)



Ex. 3 (newer)



Ex. 4 (old)

C

A musical staff in 4/4 time with a treble clef. Above the staff is the chord symbol 'C'. The staff contains four measures, each with four diagonal slashes representing a sustained chord.

Ex. 5 (new)

C7 C6 C7 C6

A musical staff in 4/4 time with a treble clef. Above the staff are the chord symbols 'C7', 'C6', 'C7', and 'C6' corresponding to the four measures. Each measure contains four diagonal slashes.

Ex. 6 (newer)

C7 C6 C7 C6 C7 C6 C7 C6

A musical staff in 4/4 time with a treble clef. Above the staff are the chord symbols 'C7', 'C6', 'C7', 'C6', 'C7', 'C6', 'C7', and 'C6' corresponding to the eight measures. Each measure contains two diagonal slashes.

Ex. 7 (old)

Am Bm

A musical staff in 4/4 time with a treble clef. Above the staff are the chord symbols 'Am' and 'Bm' corresponding to the four measures. Each measure contains four diagonal slashes.

Ex. 8 (new)

Am7 Am6 Bm7 Bmb

A musical staff in 4/4 time with a treble clef. Above the staff are the chord symbols 'Am7', 'Am6', 'Bm7', and 'Bmb' corresponding to the four measures. Each measure contains four diagonal slashes.

Ex. 9 (newer)

Am7 Am6 Am7 Am6 Bm7 Bmb Bm7 Bmb

A musical staff in 4/4 time with a treble clef. Above the staff are the chord symbols 'Am7', 'Am6', 'Am7', 'Am6', 'Bm7', 'Bmb', 'Bm7', and 'Bmb' corresponding to the eight measures. Each measure contains two diagonal slashes.

Ex. 10 (old)

A musical staff in 4/4 time with a treble clef. The key signature is one sharp (F#). The staff contains two measures of music, each with four diagonal slashes representing notes. A "D7" chord symbol is written above the first measure.

Ex. 11 (new)

A musical staff in 4/4 time with a treble clef. The key signature is one sharp (F#). The staff contains two measures of music, each with four diagonal slashes representing notes. "D7" and "D9" chord symbols are written above the first and second measures, respectively.

Ex. 12 (newer)

A musical staff in 4/4 time with a treble clef. The key signature is one sharp (F#). The staff contains three measures of music with diagonal slashes representing notes. "D7 D9", "D9", and "D7b5" chord symbols are written above the first, second, and third measures, respectively. A "G7" chord symbol is written above the end of the third measure. There are two horizontal dashes below the staff, one under the first measure and one under the third measure.

Ex. 13 (old)

A musical staff in 4/4 time with a treble clef. The key signature is one sharp (F#). The staff contains four measures of music, each with four diagonal slashes representing notes. A "G" chord symbol is written above the first measure.

A musical staff in 4/4 time with a treble clef. The staff contains four measures of music, each with four diagonal slashes representing notes. "C" and "Am" chord symbols are written above the first and third measures, respectively.

A musical staff in 4/4 time with a treble clef. The staff contains four measures of music, each with four diagonal slashes representing notes. "Bm" and "D7" chord symbols are written above the first and third measures, respectively.

Ex. 14 (newest)

Handwritten musical notation for Ex. 14, featuring three staves of guitar chords in D major, 4/4 time. The first staff has G7 and G6. The second staff has C7, C6, C7, C6, Am7, Am6, Am7, Am6. The third staff has Bm7, Bm6, Bm7, Bm6, D7, D9, D11, D7b5. A second ending bracket covers the last two measures with D13 and D13b9.

Ex. 15

Handwritten musical notation for Ex. 15, featuring a single staff of guitar chords in D major, 4/4 time. The chords are Dm7, G7, and Cmaj7.

Ex. 16

Handwritten musical notation for Ex. 16, featuring a single staff of guitar chords in D major, 4/4 time. The chords are Am7, D7, and Gmaj7.

Pops Tune

12

Handwritten musical notation for "Pops Tune" in 4/4 time. The notation consists of five staves, each with four measures of rhythmic slashes. Chord symbols are written above the staves:

- Staff 1: Cmaj7, Dm7
- Staff 2: Em7, Fmaj7
- Staff 3: G7, Am7
- Staff 4: Bm7b5, Dm7
- Staff 5: G7, Cmaj7

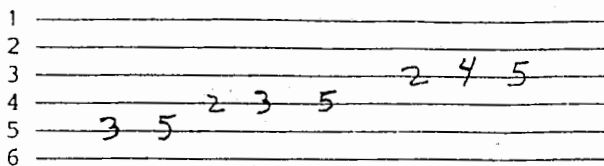
Pops Tune Too

13

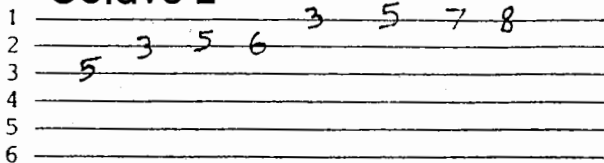
Handwritten musical notation for "Pops Tune Too" in 4/4 time. The notation consists of five staves, each with four measures of rhythmic slashes. Chord symbols and mode names are written above the staves:

- Staff 1: Cmaj7, Dm7, D Dorian
- Staff 2: Em7, F7b5, E Phrygian, F Lydian
- Staff 3: G7, Am7, G Mixolydian, A Aeolian
- Staff 4: Bm7b5, Dm7, B Locrian, D Dorian
- Staff 5: G7, C7, G mixolydian, C Major (Ionian)

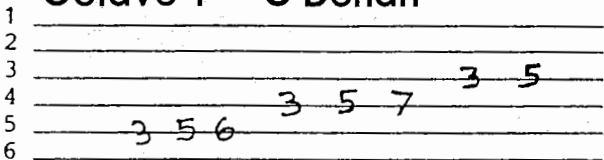
Octave 1 C Major Scale



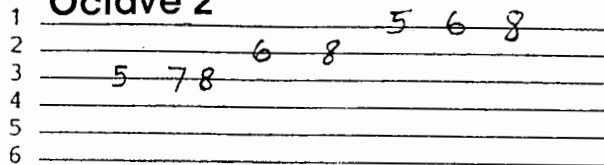
Octave 2



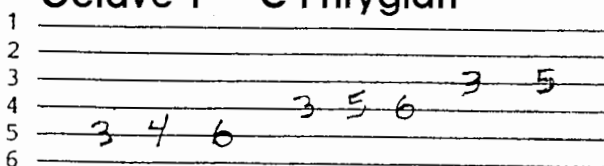
Octave 1 C Dorian



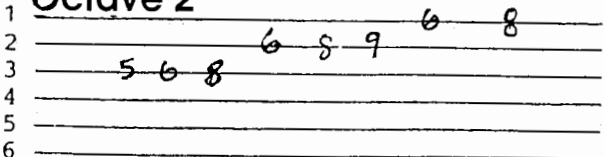
Octave 2



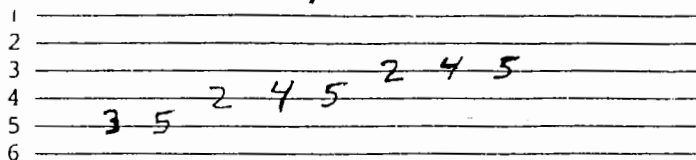
Octave 1 C Phrygian



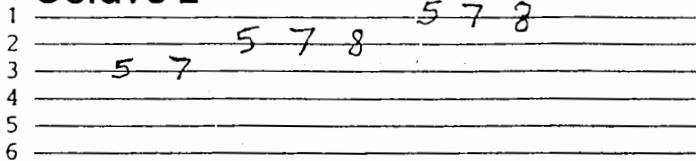
Octave 2



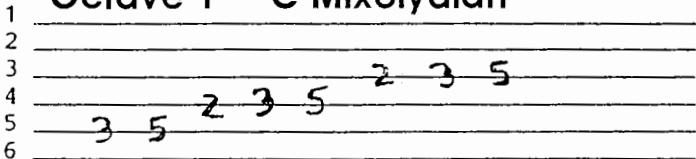
Octave 1 C Lydian Scale



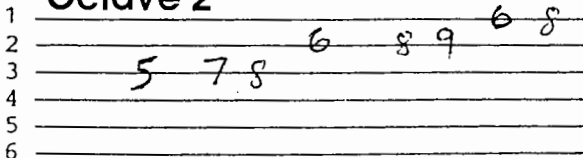
Octave 2



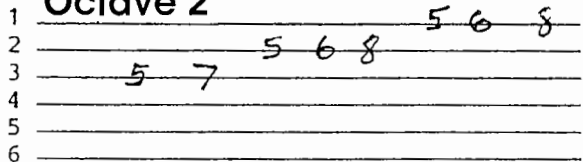
Octave 1 C Mixolydian



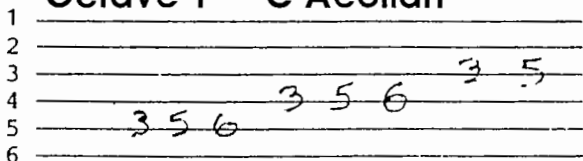
Octave 2



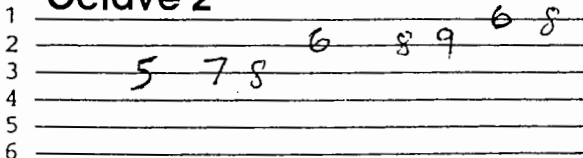
Octave 2



Octave 1 C Aeolian



Octave 2



Octave 1 C Locrian

1 _____
2 _____
3 _____ 3 5
4 _____ 3 4 6
5 _____ 3 4 6
6 _____

Octave 2

1 _____ 4 6 8
2 _____ 4 6 7
3 _____ 5 6
4 _____
5 _____
6 _____